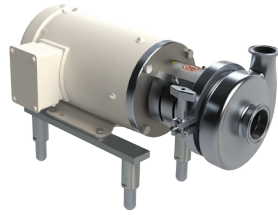


Beverage- Non-Alcoholic and Alcoholic

BC/BP Series Centrifugal Pumps



Applications:

- unloading
- transfer
- CIP supply

Materials:

- 316L
- buna, EPDM, silicone and FKM elastomers

Features:

- impeller retainer or threaded impeller nut options
- stamped volute
- wet ends, motor pump units and carts
- 3A & CIPable

Sizes:

- inlet 1½" to 6"
- outlet 1½" to 4"

JRZL Series Positive Displacement Pumps



Applications:

- unloading
- transfer
- metering
- CIP supply

Material:

- 316L

Features:

- front loading seals
- various rotor options
- 1"- 4" models stainless steel gear box standard
- 3A & EHEDG
- 100% CIPable

Sizes:

- 1" to 10"

SSV Series Seat Valves



Applications:

- isolation
- diversion

Material:

- 316L

Features:

- body machined from solid bar
- field serviceable
- various control top options
- 3A & CIPable

Sizes:

- 1" to 4"

Mix Proof Valves



Applications:

- separation of product and cleaning agent
- manifolds
- diversion

Material:

- 316L

Features:

- body machined from solid bar
- standard O-rings
- service possible without compressed air
- piggable option

Sizes:

- 1" to 6"

Beverage- Non-Alcoholic and Alcoholic

ExD Series "The Hawk" High Efficiency Centrifugal Pump



Applications:

- CIP
- fluid transfer
- filling

Materials:

- 316L
- buna, EPDM, silicone and FKM elastomers

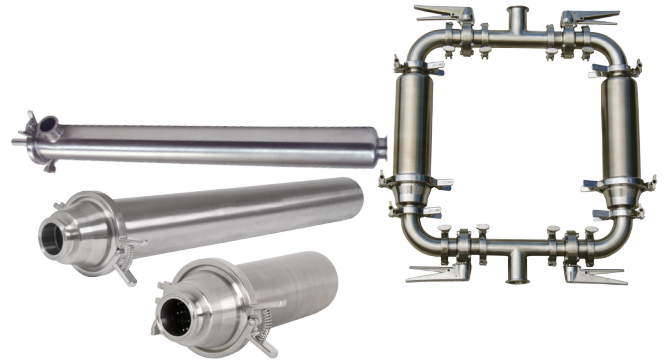
Features:

- nut-less impeller and leak detection port
- adjustable discharge port 105° without disassembly of casing and front cover
- 3A and CIPable

Sizes:

- inlet 1" to 4"
- outlet 1" to 2 1/2"

Strainers



Application:

- filtering

Material:

- 316L

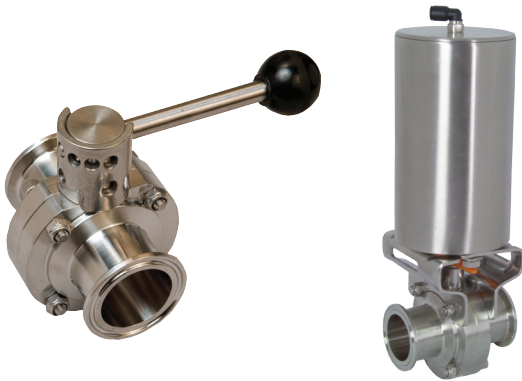
Features:

- inline
- side entry and side outlet
- dual strainer assemblies using ball or butterfly valves

Sizes:

- 1" to 3"

B5101 Series Butterfly Valves



Applications:

- isolation
- control

Materials:

- 316L
- seats-silicone, EPDM and FKM

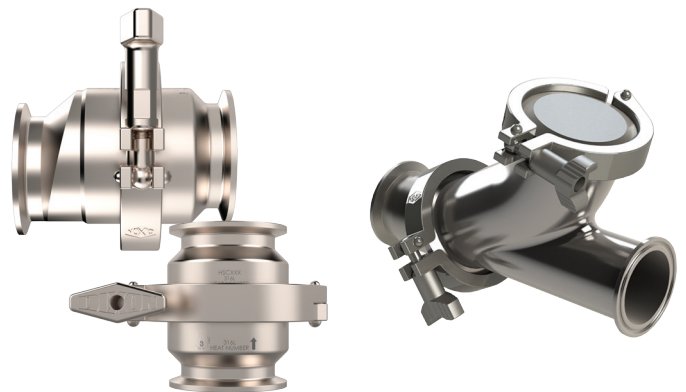
Features:

- multiple handle options
- various actuator and control packages

Sizes:

- 1/2" to 8"

Check Valves and Sight Glasses



Spring Check Valves

Y-Ball Check Valve



Sight Glasses

Dixon®, founded in 1916, is a premier manufacturer and supplier of hose couplings, valves, dry-disconnects, swivels, and other fluid transfer and control products. The company's global reach includes a wide range of products for numerous industries including petroleum exploration, refining, transportation, chemical processing, food & beverage, steel, fire protection, construction, mining and manufacturing. Dixon's strategic objective is to create solutions that make products safer, leak-free, longer lasting, and always available.



dixonvalve.com • *Customer Service:* **800.789.1718**

Dixon Sanitary

N25 W23040 Paul Road, Pewaukee, WI 53072

Fax: 800.789.4046

sanitarysales@dixonvalve.com

For complete catalog and literature downloads go to dixonvalve.com

